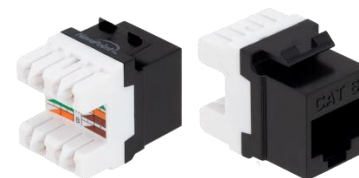

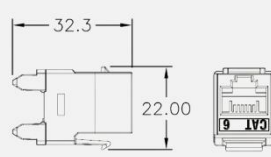


## SCHNELL CAT6 UTP SHUTTERED KEYSTONE JACK

Schnell Category 6 UTP Keystone Jack with built-in shutter ensures reliable, high-speed connectivity up to 250 MHz. Designed for 23–26 AWG solid or stranded cables, it supports Gigabit Ethernet and PoE applications. The shutter protects from dust, and the punch-down mechanism enables quick installation in patch panels, faceplates, and surface boxes.



### DIAGRAM & CONSTRUCTION

Housing	: High-Impact		IDC Terminal	: Compatible with 110 & Krone tools
Material	Polycarbonate (UL94 V-0)		Shutter	: Integrated, spring-loaded dust cover
Contact Blade	: Phosphor Bronze		Wire Gauge Support	: 23–26 AWG solid or stranded
Contact Plating	: 50 µin Gold over Nickel		Color	: White / Ivory / Custom

### ELECTRICAL CHARACTERISTICS

Contact Resistance	: ≤ 20 mΩ
Insulation Resistance	: ≥ 500 MΩ
Dielectric Strength	: 1000 V AC, 60 sec
Voltage Rating	: 150 V
Current Rating	: 1.5 A Max

### MECHANICAL & PHYSICAL CHARACTERISTICS

Insertion Durability	: ≥ 750 Mating Cycles
Termination Style	: Punch-Down
Compatibility	: Faceplates, Patch Panels, Surface Boxes
Connector Type	: RJ45 (8P8C)
Wiring Scheme	: T568 A & B
Operating Temperature	: -10°C to +60°C

### KEY FEATURES

- Punch-down UTP modular design
- Exceeds TIA/ISO standards
- Supports PoE & high-bandwidth networks
- Ideal for structured cabling racks

### KEY APPLICATIONS

- Data centers and server rooms
- LAN and multimedia distribution
- VoIP and IP camera networks
- Power over Ethernet systems

### REACTION TO FIRE

Housing Flammability	: UL94 V-0
Halogen Content	: Low (Available in LSZH assemblies)

### STANDARDS

- ANSI/TIA-568.2-D
- ISO/IEC 11801 Class E
- EN 50173-1
- IEC 60603-7

### PART NUMBER

Part Number	Description
SCZ-5010C6KJS	SCHNELL CAT6 UTP KEYSTONE JACK SHUTTERED 180D

